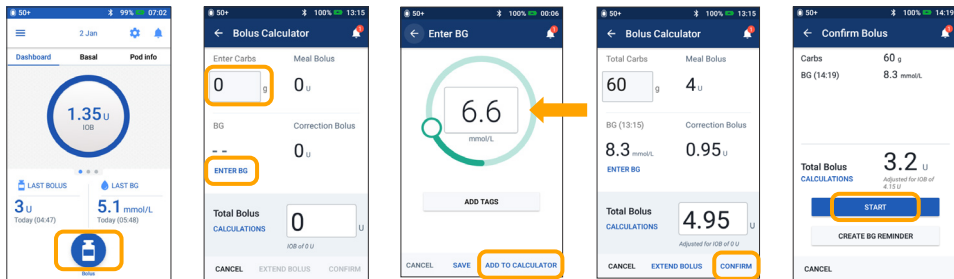


# Podder™ Quick Glance Guide

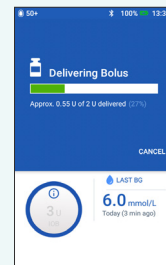
## How to Deliver a Bolus



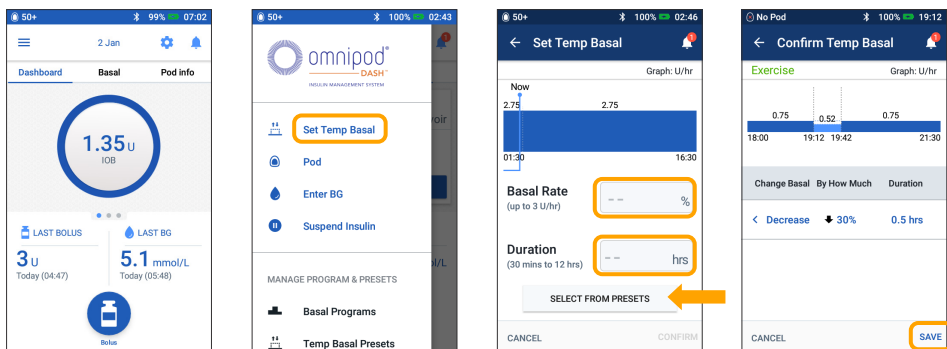
1. > Tap the Bolus button on the Home screen
2. > Enter grams of carbs (if eating)  
> Tap "ENTER BG"
3. > Enter BG manually  
> Tap "ADD TO CALCULATOR"
4. > Tap "CONFIRM" once you have reviewed your entered values
5. > Tap "START" to begin bolus delivery

### Reminder

The Home screen displays a progress bar and details while you are delivering an immediate bolus. You cannot use your Omnipod DASH® PDM during an immediate bolus.



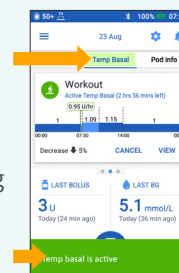
## How to Set a Temp Basal



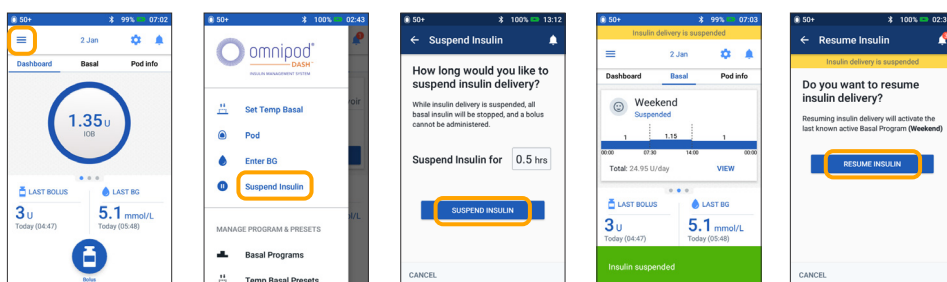
1. > Tap Menu icon on the Home screen
2. > Tap "Set Temp Basal"
3. > Tap Basal Rate entry box and select your % change  
> Tap Duration entry box and select your time duration  
> Or tap "SELECT FROM PRESETS" (if you have saved Presets)
4. > Tap "ACTIVATE" once you have reviewed your entered values

### Did you know?

- > Temp Basal is highlighted in green if there is an active temp basal rate running
- > You can swipe to the right on any green confirmation message to dismiss it sooner



## Suspend and Resume Insulin Delivery



1. > Tap Menu icon on the Home screen
2. > Tap "Suspend Insulin"
3. > Scroll to desired duration of insulin suspension  
> Tap "SUSPEND INSULIN"  
> Tap "Yes" to confirm you want to stop insulin delivery
4. > The Home screen displays a yellow banner stating insulin is suspended
5. > Tap "RESUME INSULIN" to start insulin delivery

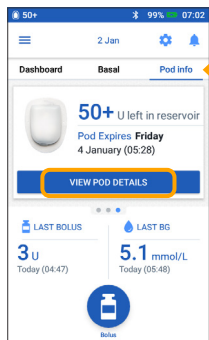
### Reminder

- > You MUST resume insulin. Insulin does not automatically resume at end of suspension period
- > The Pod beeps every 15 minutes throughout the suspension period to remind you that insulin is not being delivered
- > Your temp basal rates or extended boluses are canceled when insulin delivery suspends

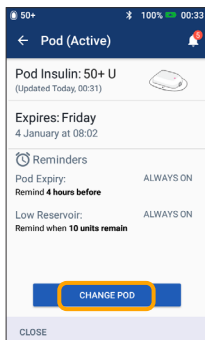
# Podder™ Quick Glance Guide

## How to Change a Pod

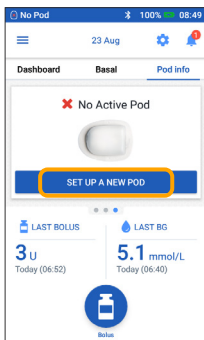
For more detailed instructions refer to the Omnipod DASH® Insulin Management System User Guide



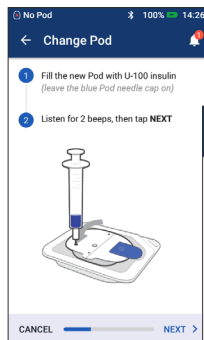
1. > Tap "Pod Info" on the Home screen  
> Tap "VIEW POD DETAILS"



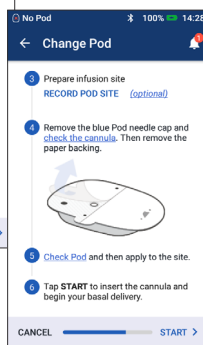
2. > Tap "CHANGE POD"  
> Carefully follow the on-screen directions  
> Pod will be deactivated



3. > Tap "SET UP NEW POD"



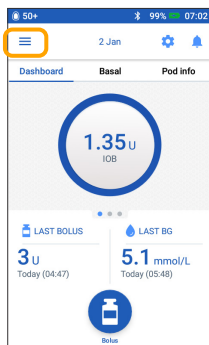
4. > Carefully follow the on-screen directions



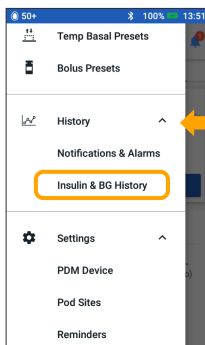
### Don't forget!

- > Keep the Pod in plastic tray during fill and prime
- > Place the Pod and Omnipod DASH® PDM next to each other and touching during priming

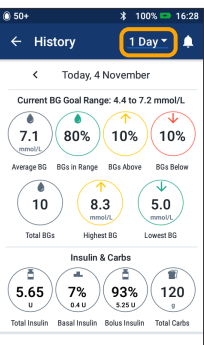
## How to View Insulin and BG History



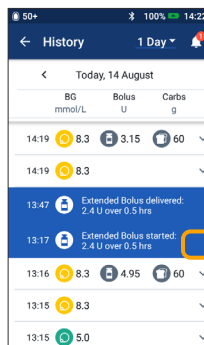
1. > Tap Menu icon on the Home screen



2. > Tap "History" to expand list  
> Tap "Insulin & BG History"



3. > Tap the day drop-down arrow to view 1 day or multiple days



4. > Continue swiping up to see the details section  
> Tap the down arrow to display more details

### History at your fingertips!

- > BG info:
  - Average BG
  - BG in Range
  - BGs Above and Below range
  - Average Readings per day
  - Total BGs (in that day or date range)
  - Highest and Lowest BG
- > Insulin info:
  - Total Insulin
  - Avg Total Insulin (for date range)
  - Basal Insulin
  - Bolus Insulin
  - Total Carbs
- > Omnipod DASH® PDM or Pod events:
  - Extended Bolus
  - Activation/reactivation of a Basal programme
  - Start/end/cancellation of a Temp Basal
  - Pod activation and deactivation

**Important Safety Information:** The Omnipod DASH® Insulin Management System is intended for subcutaneous delivery of insulin at set and variable rates for the management of diabetes mellitus in persons requiring insulin.

The Omnipod DASH® System has been tested and found to be safe for use with the following U-100 insulin: Novolog®/NovoRapid®, Humalog®, Fiasp®, Admelog® or Apidra®. Refer to the Omnipod DASH® Insulin Management System User Guide for complete safety information including indications, contraindications, warnings, cautions, and instructions.

Personal Diabetes Manager imagery is for illustrative purposes only and should not be considered to be suggestions for user settings.

The Omnipod DASH® Insulin Management System User Guide is available online at [www.omnipod.com](http://www.omnipod.com) or by calling Omnipod® Customer Care Team (24 hours/7 days), at 0800 011 6132 (Outside the UK +44 20 3887 1709). This Podder™ Quick Glance Guide is for Personal Diabetes Manager model PDM-INT2-0001-MM. The Personal Diabetes Manager model number is written on the back cover of each Personal Diabetes Manager.

©2020 Insulet Corporation. Omnipod, the Omnipod logo, DASH, the DASH logo and Podder are trademarks or registered trademarks of Insulet Corporation in the USA and other various jurisdictions. All rights reserved. 1 King St, Hammersmith London W6 9HR. INS-ODS-09-2019-00016-V4

