



Insulin Management System



OmniPod Extension

for the CoPilot® Health Management System

Version 1.1

For use with **PDM model UST200**

Quick Start Guide

Use the OmniPod Extension to download your PDM's insulin, glucose and carbohydrate data to the CoPilot® Health Management System, and to create a report of your PDM settings.

This guide will help you install the OmniPod Extension software. It also describes how to download your PDM data. Please see the OmniPod Extension User Guide for complete instructions on using the program.

▶ Assemble the following items:

- Your PDM (Personal Diabetes Manager)
- Your personal computer
- The OmniPod Extension CD or an Internet connection to download the OmniPod Extension installation file
- A USB cable (USB A to USB mini-B)

.....
Note: Use only a USB A to USB mini-B cable. USB A is a standard USB connector. USB mini-B is the smaller end. Do not use a USB cable identified as "micro".
.....



▶ Step One

Install the CoPilot® Health Management System Software

- Be sure to install CoPilot **before** installing the OmniPod Extension.
- You may obtain CoPilot from Abbott Diabetes Care (www.abbottdiabetescare.com).

Step Two

Install the OmniPod Extension Software

- Insert the OmniPod Extension CD into your computer's CD/DVD drive,
~or~
- Download the OmniPod Extension installation file from the Customer Care section of MyOmniPod.com; then double-click the file (**OmniPod.exe**).

Installation will begin automatically, and may take a few minutes. A series of screens, such as the one shown at right, will guide you through the process.

- Navigate through the installation screens, adjusting installation settings as necessary. Click <Next> to proceed to the next screen, or <Cancel> to quit installation. At the end, you may have to restart your computer.



▶ Step Three



Download Your PDM Data

- Connect the large end of the USB cable (USB A) to a USB port on your computer, and connect the small end of the USB cable (USB mini-B) to your PDM. Wait for the PDM to display “USB device ready” to indicate that it has finished preparing the data file for download.



When you connect a USB cable to the PDM, only use a cable that is less than or equal to 9 feet (2.7 meters) in length.



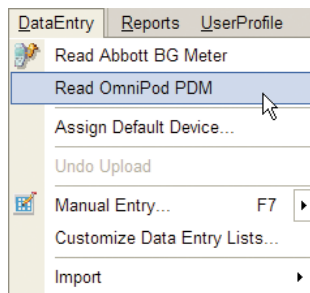
Only connect a USB cable to your PDM when downloading data to a computer. Other PDM functions are disabled while a USB cable is connected, and the PDM cannot communicate with the Pod.



Never attempt to test your blood glucose while your PDM is connected via USB cable to a computer. Doing so could result in electric shock.

To view your insulin, glucose and carb data in CoPilot

- Start the CoPilot System.
- Start the download by choosing <DataEntry>, <Read OmniPod PDM> from the CoPilot home page.



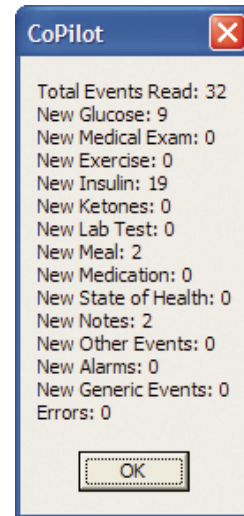
- If this is the first time you are downloading your PDM to CoPilot, you will see the New Device/Data Source message. Select the user with whom to associate this PDM. If you have not set up your user profile in CoPilot, choose **Add a new user**.

To associate the PDM with another user who already has a profile in CoPilot, choose <Cancel>, then choose the person to whom to assign the PDM in the **Select User** or **Select Patient** box. Then restart the download.

.....
Note: You may also use the **Select User** or **Select Patient** box (if using CoPilot in healthcare professional mode) to select the correct user profile for your PDM before downloading.
.....

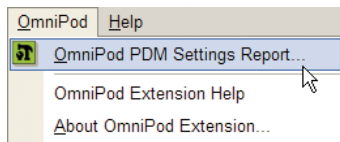
- The CoPilot System displays a status report, as shown at right, with a summary of all event types and the number of records transferred.

.....
Your glucose, insulin and other event data are now ready to be viewed in CoPilot reports. (Refer to CoPilot Help for details on using the reports.)
.....



To view your PDM settings in the OmniPod PDM Settings Report

- Choose <OmniPod>, <OmniPod PDM Settings Report> or click the toolbar icon .

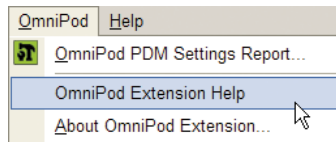


Your PDM settings data are now ready to be viewed in the OmniPod PDM Settings Report. (Refer to the OmniPod Extension User Guide for details on using this report.)

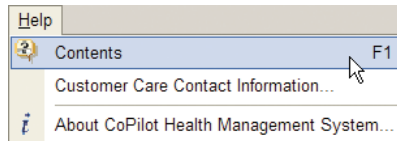
Accessing Help

For help with the OmniPod Extension or the OmniPod PDM

Settings Report: Choose <OmniPod>, <OmniPod Extension Help>:



For help with CoPilot: Choose <Help>, <Contents>, or press the <F1> key from any page in CoPilot for topic specific help:





Insulin Management System

Insulet Corporation
9 Oak Park Drive
Bedford, MA 01730 USA
800.591.3455 / 781.457.5098
MyOmniPod.com

© 2010 Insulet Corporation. All rights reserved. Printed in USA.
CoPilot is a registered trademark of Abbott Laboratories.
Microsoft and Windows are registered trademarks of Microsoft Corporation.

13717-AW Rev B